



ATI DeskTop Help

Welcome to the ATI DeskTop, your single point access to all your ATI products and features. To learn more about the desktop, click on the area you want information on, or see: [Introduction](#).



Note: Depending on the ATI products you've installed, your DeskTop may not have the same icons as shown above.

Title Bar

This bar displays the name of your application and allows you to control the appearance of the application window. For more information see [Title Bar](#)

Menu Bar

The bar displays the various commands available. For more information see [Menu Bar](#)

Desktop Buttons

These buttons provide quick access to ATI DeskTop functions. For more information see [DeskTop Buttons](#)

Product Groups

This area displays the ATI products and features available to you. Double-clicking on any of these icons will activate the application. For more information see [Product Groups](#)

Status Bar

This bar displays brief explanations of the commands and icons you access. For more information see [Status Bar](#).



Introduction

If you've just installed an ATI product, take a few moments to familiarize yourself with the ATI DeskTop by browsing through this help file. For help on individual products and features, use the [Help On](#) button. If you wish to return to a major section of the help file, click on the [icon](#) in the title.

The ATI DeskTop lets you control and configure ATI products, features and drivers (upgraded for the Windows environment). The DeskTop is supplied with all ATI products that run under Windows 3.1.

The DeskTop displays each installed ATI product in its own [Product Group](#). Within each product group, there's a [Product Logo](#), plus a [Feature Icon](#) for each of the product's features. To access a feature or product, double-click on its icon. If you want to get information on the product/feature before accessing it, click on the Help On button.

For Help on using Help, Press F1

See also:

[Menu Bar](#)
[DeskTop Buttons](#)
[Status Bar](#)



Menu Bar

The two menus in the Menu Bar offer commands that let you control how the desktop operates:

The File menu:

Command	Function
Exit	exits the desktop. You can also exit by clicking the OK Button , Esc or Alt+F4.

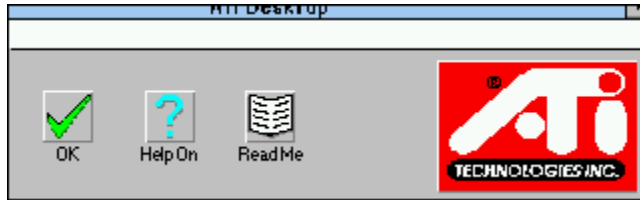
The Help menu:

Command	Function
Contents	displays the ATI DeskTop help contents.
Using Help	displays help on using this help system.
Customer Support	displays the ATI Customer Support dialog .
About	displays version information on the ATI DeskTop.



DeskTop Buttons

The ATI DeskTop buttons provide quick access to desktop functions. Most functions can also be accessed through the commands in the [menu bar](#). For more information, click on the button you want to learn about:



OK Button

Exits the desktop and restarts Windows. See [OK Button](#) for more information.

Help On Button

Accesses help on the buttons and features in the desktop. See [Help On Button](#) for more information.

Read Me Button

Accesses any Read Me files for products or features. See [Read Me Button](#) for more information.

Main Logo

Accesses Customer Support and problem report information. See [Main Logo](#) for more information.



Main Logo



Double click this logo to access the [Customer Support dialog](#) which allows you obtain customer support telephone numbers and generate a problem report. The report will include pertinent data on your system and card configuration to help solve your problem. You should have it ready before contacting Customer Support.

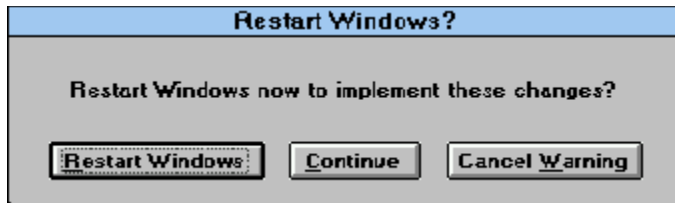
You can also shift-double-clicked the logo to obtain [version information](#) for the ATI DeskTop.



OK Button

Use the OK button to exit the ATI DeskTop. You can also exit the desktop using the File menu Exit command, hitting Esc or Alt+F4.

The following dialog will appear whenever changes you've made require a restart of Windows:



If you select the **Restart Windows** button, Windows will automatically restart. The screen will blank out for several seconds during this process.

If there are open applications with unsaved changes, it will prompt you to save your changes. If you cancel any of these prompts, the restart will be aborted. To restart Windows again, you will have to re-enter ATI DeskTop and choose OK.

If you select the **Continue** button, ATI DeskTop will close without restarting Windows, any changes you made will not be in effect until the next time you restart Windows. Since [INI files](#) may have already been modified, you should exit Windows after selecting Continue.

If you select the **Cancel Warning** button, ATI DeskTop will not prompt you to restart Windows until the next time you make changes that require a restart. Since the **Restart Windows** dialog is a handy reminder that you have made some unimplemented changes, it is not recommended that you choose this option.



Help On Button

When you select the Help On button, the cursor turns into the '[Help cursor](#)' and the application switches to Help Mode. In this mode, clicking on any part of the ATI Desktop will access a help window for the selected item.

In the case of product logos and feature icons, the help system for the specific product or feature will be accessed. If there is no help available for the product or feature, general help on product logos or feature icons is displayed.

You can also:

- Toggled Help Mode on and off by pressing F2.
- Use Esc to return to normal mode.
- You can also obtain help on a selected feature by pressing F1.



Read Me Button

When you select the Read Me button, the cursor turns into the '[Read Me' cursor](#) and the application switches to Read Me Mode. In this mode, clicking on any product logo or feature icon will access any Read Me information available for the selected item. Read Me information usually accompanies products to act as a convenient on-line reference of up-to-date information.

You can also:

- Toggled Read Me mode on and off , by pressing F3.
- Use Esc to return to normal mode.



Status Bar

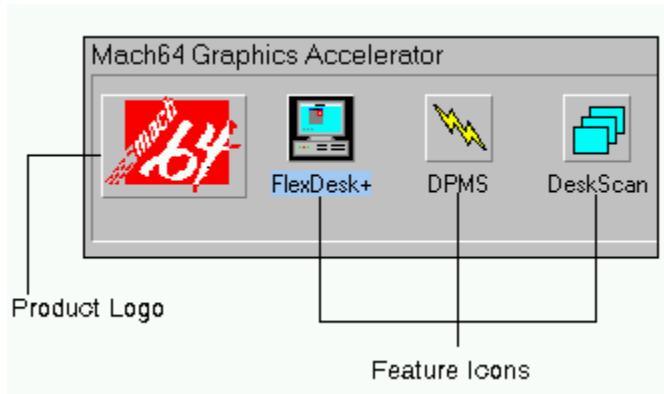
The Status Bar, located at the bottom of the ATI DeskTop window, displays a brief description of the currently selected feature in the [Product Group](#) area.

In [Help mode](#) and [Read Me mode](#), the status bar displays a short help message on these modes.



Product Groups

Each ATI product installed on your system will have its own product group on the DeskTop. Each group is identified by a [product logo](#) and contains a set of [Feature Icons](#) for each application feature or product. For example:



Use the [help cursor](#) to get help on specific products.



Product Logos

A product logo uniquely identifies an ATI product installed on your system. It performs the following functions:

- when selected with the [help cursor](#) , it accesses product specific help
- when selected with the [read me cursor](#) , it accesses product-level ReadMe information
- when double-clicked, it activates a product demo
- when shift-double-clicked, it accesses product [version information](#) .

Note: Not all Product Logos will perform these functions.



Feature Icons

Feature icons uniquely identify each feature application within a product (for example, a color adjustment feature application for a graphic accelerator product). They also serve a variety of functions:

- when selected with the [help cursor](#), they access feature-specific help
- when selected with the [read me cursor](#), they access feature-specific Read Me information.
- when shift-double-clicked, they access feature [version information](#).

To launch a feature application, double-click on its icon, or select it and hit Enter.

When a feature is selected, its name is highlighted and a short description appears in the [status bar](#).

ATI Customer Support

The ATI Customer Support dialog can be accessed using the Customer Support option in the Help menu, or by double-clicking the ATI [Main Logo](#).

Scroll through the dialog display to find information on getting assistance from ATI. This information includes the following:

ATI Customer Support:

Hours: Monday to Friday 9:00am - 7:00pm EST

Telephone: (905) 882-2626

Facsimile: (905) 882-0546

ATI Download BBS: (905) 764-9404

24 hours (14400/9600/2400/1200 baud; 8 data, no parity, 1 stop)

CompuServe: GO ATITECH

ATI SUPPORT 74740,667

The dialog also allows you to create a problem report, which should be used when contacting ATI directly, or mailed to ATI Customer Support for further analysis.

▶ To create a problem report:

- 1. In the ATI Customer Support dialog, select the Yes button.**

The Problem Report window will appear.

- 2. In the window, complete all customer and problem information.**

- 3. Select OK.**

A problem report file will be automatically created and placed in your Windows directory (usually C:\WINDOWS), under the name ATI_PR.TXT.

The Problem Report dialog will then appear, allowing you to access the Notepad application to view the report.

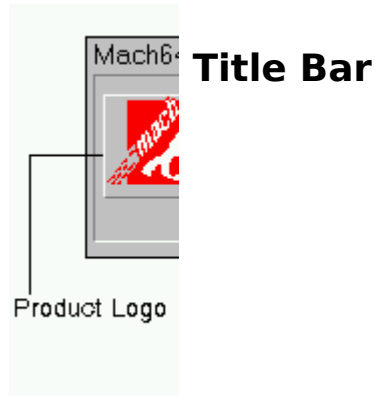
- 4. In the dialog, select Yes.**

The Notepad application will open displaying your problem report. From here you can use the Notepad commands to file or print the report.

Version Information

Version information identifies the version of the application you're running and copyright information. This information can be accessed for any product or feature by double-clicking the product logo or feature icon, while holding down the Shift key.

Version information for the ATI DeskTop itself can be obtained by shift-double-clicking the ATI [Main Logo](#) , or using the About command in the Help menu.

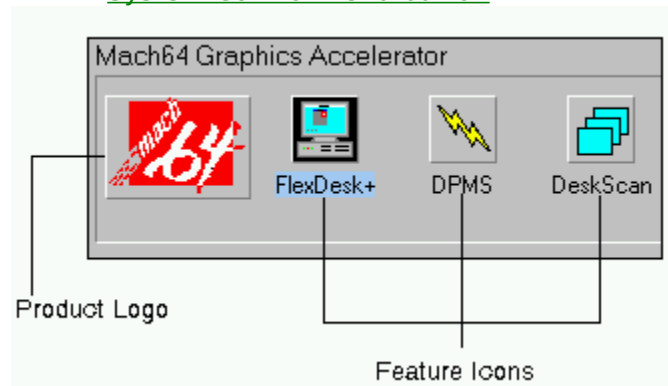


The title bar, located along the top of a window, displays the name of the application and filename and path of the current file.

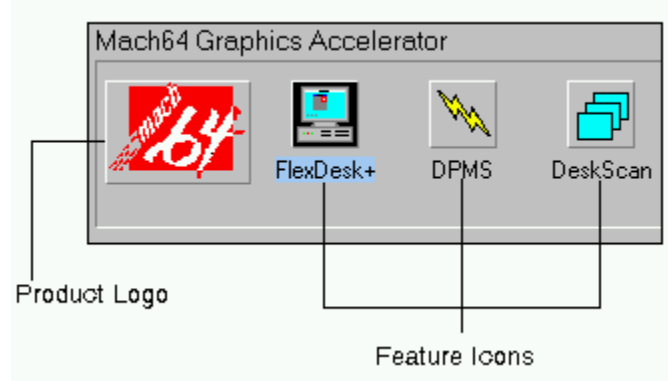
You can use the title bar to move the window. Click the bar and drag the window to new location. You can also move dialog boxes by dragging their title bars.

The title bar contains the following elements:

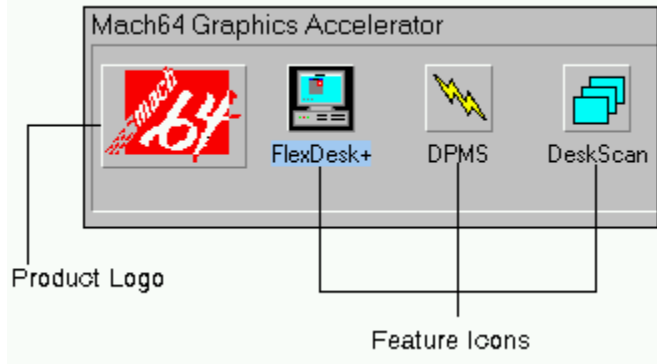
- [System Control Menu button](#)



[Minimize button](#)

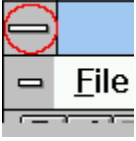


Name of the application



Filename and path of the current file.

System Control Menu Button



See also: [System Control Menu](#).

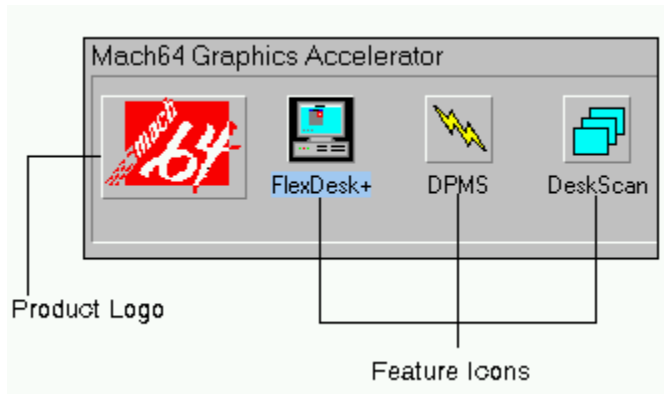
Minimize Button



Maximize Button



System Control Menu




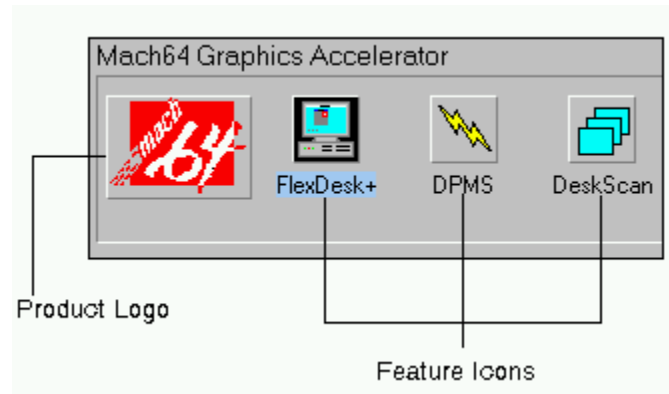
This menu, located on the title bar, controls the look of your application window. It offers the following options:

- [Size](#)
- [Move](#)
- [Minimize](#)
- [Maximize](#)
- [Close](#)
- [Switch To](#)

Size Command



Use this command to display a four-headed arrow  you can use to size the active window.



To change the window's size:

1. Press one of the DIRECTION keys (left, right, up, or down arrow keys from the keyboard) to move the pointer to the border you want to move.
2. Press a DIRECTION key to move the border.
3. Press ENTER when the window is the size you want.

Note: This command is unavailable if you maximize the window.

Shortcut

Mouse: Drag the size bars at the corners or edges of the window.

See Also

Move Command



Use this command to display a four-headed arrow



you can use to move the active window move or dialog box with the arrow keys.



To move the window:


1. Press one of the DIRECTION keys (left, right, up, or down arrow keys from the keyboard) to move the outline of the window to a desired location.
2. Press ENTER when the window is the where you want it.

Minimize Command



Use this command to reduce the **MEDIA**CAPTURE window to an icon.

Shortcut

Mouse: Click the minimize icon  on the [title bar](#).

Maximize Command



Use this command to enlarge the active window to fill the available space.

Shortcut

Mouse: Click the maximize icon  on the [title bar](#); or double-click on the title bar.

Next Window Command

Use this command to switch to the next open document window. **MEDIA**CAPTURE determines which window is next according to the order in which you opened the windows.

Shortcut

Keys: Ctrl+F6

See Also

Previous Window Command

Use this command to switch to the previous open document window. **MEDIACAPTURE** determines which window is previous according to the order in which you opened the windows.

Shortcut

Keys: Shift+Ctrl+F6

Close Command



Use this command to close the active window or dialog box.

Shortcuts

Keys: CTRL+F4 closes a document window, ALT+F4 closes the application window or dialog box

Mouse: Double-clicking a Control-menu box is the same as choosing the Close command.



See Also

Restore Command



Use this command to return the active window to its size and position before you chose the [Maximize](#) or [Minimize](#) commands.

See Also

Switch To Command



Use this command to display a "[Task List](#)" of all open applications. Use the list to switch to or close an application on the list.

Shortcut

Keys: CTRL+ESC

Task List dialog box

When you choose the [Switch To](#) command, this a dialog box will appear. It offers the following options:

Task List

Select the application you want to switch to or close.

Switch To

Activates the selected application.

End Task

Closes the selected application.

Cancel

Closes the Task List box.

Cascade

Arranges open applications so they overlap and you can see each title bar. This option does not affect applications reduced to icons.

Tile

Arranges open applications into windows that do not overlap. This option does not affect applications reduced to icons.

Arrange Icons

Arranges the icons of all minimized applications across the bottom of the screen.







Initial Settings Files

The INI file is used to configure the settings of an application when it is first run.

